
**TOWN OF EASTEND
WTP, RAW WATER RESERVOIR & INTAKE UPGRADES**

BCL File #103.02-7B
February 10, 2021

General Progress to Date

In January, project progress included:

- Exterior siding was completed including building's west side gable.
- Office millwork has been installed including all the cupboards and drawing drawers. Windows are installed as well. Only tilework and furniture installation remain.
- Plant storage and work units including the two shelving units, closet storage and workbench have been built and moved into place.
- Mechanical work continued including:
 - Process treatment skids and clean-in-place system were set in their final locations.
 - Process piping is underway, starting between the nanofiltration unit, CIP system and reservoir discharges.
 - Domestic water lines (to various taps and sinks) are generally plumbed in.
 - Emergency shower / eye wash, mop sink and tempering valve plumbing installed in the chemical room.
 - Distribution header including the stainless-steel distribution piping, check valves and butterfly valves are installed.
- Electrical work continued including:
 - Electrical distribution rough-in is well underway.
 - Lighting is virtually completed within the plant.
 - Main service and MCC distribution equipment are in place.

During the next work period (month), construction is expected to include continued advancement of the mechanical and electrical work within the building. Reservoir and intake structure work will resume in spring.

Progress Certificate

Progress No. 9 is certified and represents work completed to January 31, 2021. Westridge Construction Ltd. is eligible for payment in the amount of \$614,966.12.

Westridge provided their required WCB clearance and Statutory Declaration paperwork along with their invoice.

Payment in the amount of \$61,558.17 should also be made to the holdback trust account, as required by the Builder's Lien Act. Total holdback to date should be \$494,922.79 plus taxes.

Another large item this month in the progress is for the installation of the treatment process equipment. This entitles the contractor up to 75% payment (up from 50% last month) on the process equipment which made up \$362,500 of the progress for the month.

Change Orders

No new change orders have been brought forward since the last report.

Price Requests / Contemplated Change Orders

Some small changes between the electrical design allowances and construction coordination are in discussion between the electrical subcontractor, contractor, and engineers. One change was for a breaker type change for the UF control panels (~\$500) and another is to bring power to the chain hoist location (price TBD). These will be discussed and brought to the Town's attention as soon as possible.

Construction Schedule

An updated construction schedule was provided by Westridge on November 5, 2020. According to the update, Westridge is generally on track. Some individual items are behind the original schedule but overall, the progress is targeting the same completion dates. No large delays are anticipated at this time but will continue to be monitored throughout the project.

Testing

No further test results have been received since the previous report.

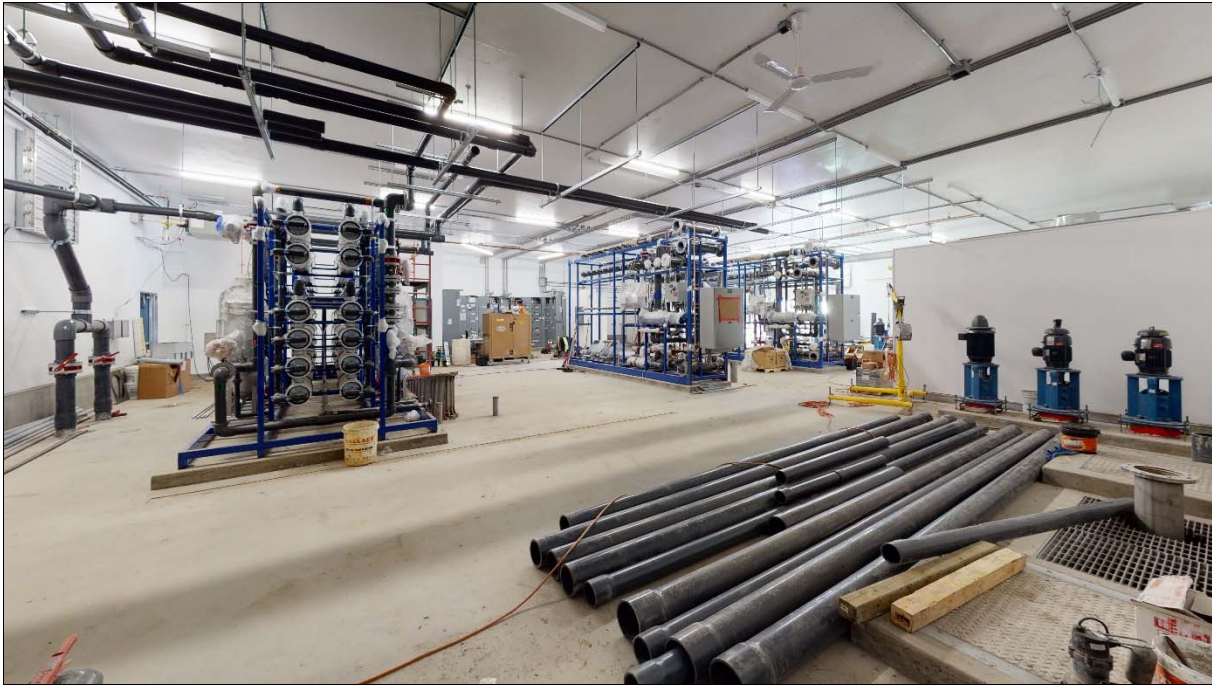
Shop Drawings

Westridge has provided 50 shop drawing submittals to date and all have been reviewed and returned. No new shop drawings have been received since the previous report.

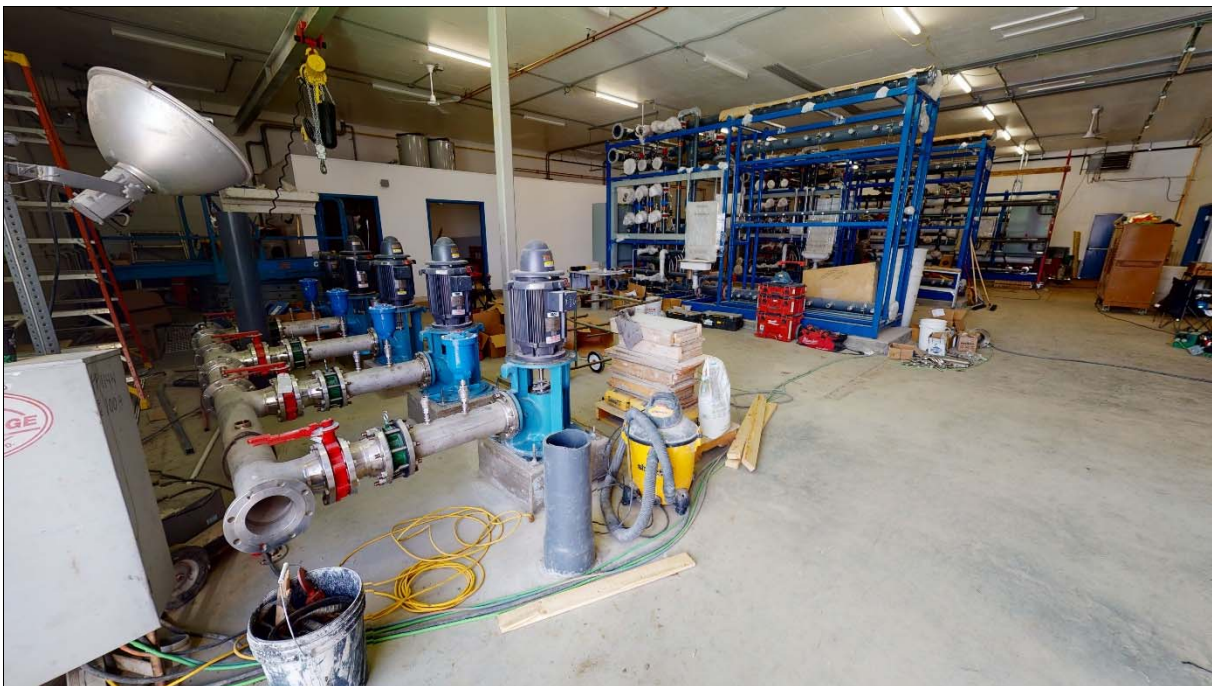
Photos



Treatment skids are installed; domestic water piping and electrical conduit installation started.



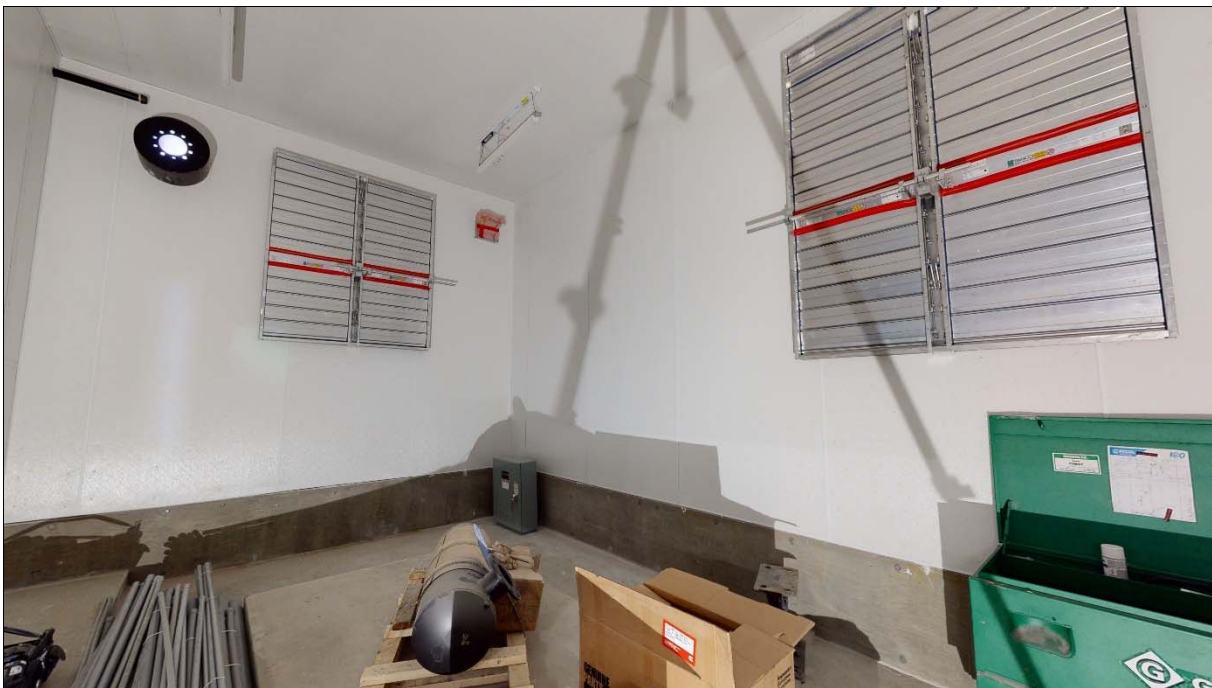
Mechanical has progressed well, pipes and hangers in place and additional materials on site.



Distribution pump header including stainless steel piping, check valves and butterfly valves.



Electrical rough in and MCC work underway.



Generator room paneling is complete, ventilation systems ready for generator installation.



Office millwork is complete; office requires tiling and furniture.



Chemical room construction / plumbing; cut-outs for ventilation fans in ceiling.



Front entrance, storage shelves and closet storage.



Office, overhead door, and work bench.

Prepared by: Matthew Feige, P.Eng.